

TOSHIBA

FRONT LOADING WASHING MACHINE

OWNER'S MANUAL

TW-BK95GF4T

TW-BK105GF4T

TW-BK115GF4T

Read This Manual 

Read all instructions and explanations for the installation before use. Follow the instructions carefully. Keep the operation instructions handy for later use. If the appliance is sold or passed on, ensure that the new owner always receives this operation instructions.

CONTENTS

SAFETY INSTRUCTIONS

- Safety Instructions 2

INSTALLATION

- Product Description 11
- Installation 12

OPERATIONS

- Quick Start 16
- Before Each Washing 18
- Detergent Dispenser 19
- Control Panel 20
- Option 21
- Other Functions 23
- Programmes 28
- Washing Programmes Table 29

MAINTENANCES

- Cleaning And Care 30
- Trouble Shooting 33
- Technical Specifications 35

SAFETY INSTRUCTIONS

■ Safety Instructions

For your safety, the information in this manual must be followed to minimize the risk of fire or explosion, electric shock, or to prevent property damage, personal injury or loss of life.

Explanation of the symbols:

Warning!

This combination of symbol and signal word indicates a potentially dangerous situation which may result in death or serious injuries unless it's avoided.

Caution!

This combination of symbol and signal word indicates a potentially dangerous situation which may result in slight or minor injuries or damage to property and the environment.

Note!

This combination of symbol and signal word indicates a potentially dangerous situation which may result in slight or minor injuries.

Warning!

ELECTRIC SHOCK HAZARD

- If the supply cord is damaged, it must be replaced by the manufacturer, its service agent or similarly qualified persons in order to avoid a hazard.
- If the machine is damaged, it must not be operated unless repaired by the manufacturer, its service agent or similarly qualified persons. Risk of electric shock!

SAFETY INSTRUCTIONS

- Before maintenance, unplug the appliance.
- This appliance must be grounded. In the event of Malfunction or breakdown , grounding will reduce the risk of electric shock by providing a path of least resistance for electric current.
- This appliance is equipped with a cord having an equipment-grounding conductor and grounding plug.The plug must be plugged into an appropriate outlet that is properly installed and grounded in accordance with all local codes and ordinances.
- Improper connection for the appliance when using not grounded outlet or when GND terminal of outlet is not suitable with GND terminal of power plug, can result in risk of electric shock. Check with a qualified electrician or service person if you are in doubt as to whether the appliance is properly grounded.
- Do not modify the plug provided with the appliance.If it does not fit the outlet , have a proper outlet installed by a qualified electrician.
- Make sure that the water and electrical devices must be connected by a qualified technician in accordance with the manufacturer's instructions and local safety regulations.
- Pull out its plug from the power socket before cleaning or maintenance.
- Do not use any socket with rated current less than that of appliance. Never pull out power plug with wet hand.
- Please remember to disconnect water and power supply immediately after the clothes are washed.

SAFETY INSTRUCTIONS

RISK TO CHILDREN

- This appliance is not intended for use by persons (including children) with reduced physical, sensory or mental capabilities or lack of experience and knowledge unless they have been given supervision or instruction concerning use of the appliance by a person responsible for their safety.
- Children should be supervised to ensure that they do not play with the appliance.
- Cleaning and user maintenance shall not be made by children without supervision.
- Animals and children may climb into the machine. Check the machine before every operation.
- Glass door may be very hot during the operation. Keep children and pets far away from the machine during the operation .

For use in EU countries:

- The appliance can be used by children aged from 8 years and above and persons with reduced physical, sensory or mental capabilities or lack of experience and knowledge if they have been given supervision or instruction concerning use of the appliance in a safe way and understand the hazards involved.
- Children of less than 3 years should be kept away unless continuously supervised.

SAFETY INSTRUCTIONS

RISK OF EXPLOSION

- Do not wash articles that have been cleaned in, washed in, soaked in, or spotted with combustible or explosive substances (such as wax, oil, paint, gasoline, degreasers, dry-cleaning solvents, kerosene, etc.) This may result in fire or explosion.
- The washer is not to be used if industrial chemicals have been used for cleaning.

INSTALLATION LOCATION AND SURROUNDING

- All washing and additional substances are to be kept in a safe place out of the reach of children.
- Do not install the machine on a carpet floor. The obstruction of the openings by a carpet can damage the machine.
- Keep the appliance clear from heating sources and direct sunlight to avoid plastic and rubber parts to corrode.
- Do not use the appliance in humid environments or rooms containing explosive or caustic gas. In case of water leakage or water splashes let the appliance dry in the open air.
- The appliance must not be installed behind a lockable door, a sliding door or a door with a hinge on the opposite side to that of the washer dryer.
- Do not operate the machine in rooms with a temperature of below 5°C. This can cause damages to parts of it. If it is unavoidable, make sure to drain the water completely from the appliance after every use (see “Maintenance - Cleaning of drain pump filter”) to avoid damages caused by frost.
- Never use flammable sprays or substances in the immediate proximity of the appliance.

SAFETY INSTRUCTIONS

INSTALLATION

- Remove all packaging material and transport bolts before using the appliance. Otherwise, serious damage may result.
 - This appliance is equipped with a single inlet valve and can be connected to the cold water supply only.
 - Mains plug must be accessible after installation.
 - Before washing clothes for the first time, the product shall be operated once throughout all the procedures without any clothes inside.
 - Before using the washer dryer, the product shall be calibrated.
 - Do not put any excessively heavy objects on the appliance, like water containers or heating devices.
 - The new hose-sets supplied with the appliance are to be used and that old hose-sets should not be reused.
- Max. Inlet water pressure 1 MPa.
Min. inlet water pressure 0.05 MPa.

ELECTRICAL CONNECTION

- Make sure the supply cable is not trapped by the machine, it can get damaged.
- Connect the product to a grounded outlet protected by a fuse complying with the values in the “Technical specifications” table. The grounding installation has to be made by a qualified electrician. Ensure that the machine is installed in accordance with the local regulations.
- Water and electrical connections must be carried out by a qualified technician in accordance with the manufacturer’s instructions and local safety regulations.
- Don’t use multiple plugs or extension cords.
- The appliance must not have an external switching device such as a timer or connected to a circuit that is regularly switched on and off.
- Do not pull the plug out of the mains outlet if there is flammable gas around.
- Never pull out power plug with wet hands.
- Always pull at the plug, not at the cable.
- Always unplug the appliance if it is not being used.

SAFETY INSTRUCTIONS

WATER CONNECTIONS

- Check the connections of the water inlet hose, the water tap and the outlet hose for possible problems due to changes of water pressure. If the connections loosen or leak close the water tap and get it repaired. Do not use the appliance before the pipes and hoses are installed properly by qualified persons.
- The water inlet and outlet hoses have to be safely installed and remain undamaged. Otherwise, water leakage can occur.
- Do not remove the drain pump filter while there is still water in the appliance. Big quantities of water can leak out, and there is a risk of scalding due to hot water.

RISK OF DAMAGING APPLIANCE

- Your product is only for home use and is only designed for the textiles suitable for machine washing.
- Do not climb up and sit on top cover of the machine.
- Do not lean against machine door.
- Please do not close the door with excessive forces. If it is found difficult to close the door, please check if clothes are put in or distributed well.
- It is forbidden to wash carpets.

SAFETY INSTRUCTIONS

OPERATION AND MAINTENANCE

- The washing machine is not to be used if industrial chemicals have been used for cleaning. Risk of explosion.
- Hands shall not be inserted into running drums.
- Before washing the clothes at first time, the product shall be operated in one round of the whole procedures without the clothes inside. The suggested program is "DRUM CLEAN".
- Never use any flammable, explosive or toxic solvents. Do not use gasoline and alcohol etc. as detergents. Only select detergents that are suitable for washing machine .
- Make sure that all pockets are emptied. Sharp and rigid items such as coins, brooches, nails, screws, stones etc. may cause serious damages to this machine.
- Remove all objects from pockets such as lighters and matches before use the appliance.
- Items that have been soiled with substances such as cooking oil, acetone, alcohol, petrol, kerosene, spot removers, turpentine, wax and wax removers should be washed in hot with an extra amount of detergent before being dried in the appliance. Items containing foam rubber (latex foam), shower caps, water proof textiles, rubber backed articles and clothes or pillows fitted with foam rubber pads should not be dried in the machine
- Fabric softeners or similar products should be used as recommended in their instructions.
- Never try to open the door forcefully. The door will unlock shortly after the end of a cycle.
- Please do not close the door with excessive force. If it is found difficult to close the door, please check if the clothes are properly inserted and distributed.
- Please check whether the water inside the drum has been drained before opening its door. Please do not open the door if there is any water visible.
- Be careful of burning when the product drains hot washing water.
- Never refill the water by hand during washing.
- After program is completed, Please wait for two minutes to open the door.

SAFETY INSTRUCTIONS

- Always unplug the appliance and close the water tap before cleaning and maintenance and after each use.
- Never pour water over the appliance for cleaning purpose. Risk of electric shock!
- Repairs shall only be carried out by the manufacturer, its service agent or similarly qualified persons in order to avoid a hazard. The producer will not be responsible for damages caused by the intervention of not authorized persons.

TRANSPORT

- Before Transport:
 - Bolts shall be reinstalled to the machine by a specialized person
 - Accumulated water shall be drained out of the machine
- This appliance is heavy. Transport with care. Never hold any protruding part of the machine when lifting. The machine door cannot be used as a handle.

INTENDED USE

- The product is intended only for home use and for textiles in household amounts suitable for machine washing and drying. This appliance is for indoor use only and not intended for built in use. Only use according to these instructions. The appliance is not intended for commercial use.
- Any other use is considered as improper use. The producer is not responsible for any damage or injuries that may result of it.
- This appliance is intended to be used in household and similar applications such as:
 - Staff kitchen areas in shops, offices and other working environments;
 - Farm houses;
 - By clients in hotels, motels and other residential type environments;
 - Bed and breakfast type environments;
 - Areas for communal use in blocks of flats or in launderettes.

SAFETY INSTRUCTIONS

ENVIRONMENT

Disposal of old appliances

For use in EU countries

This appliance is labelled in accordance with the European Directive 2012/19/EU on waste electrical and electronic equipment (WEEE). The directive provides the framework for the EU-wide take-back and recycling of waste equipment.



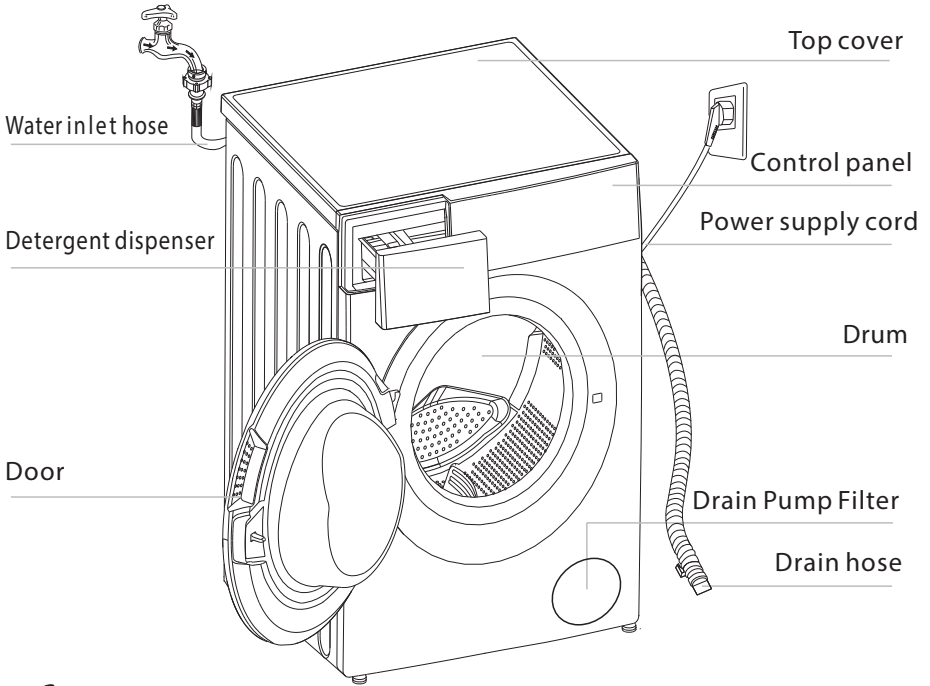
**The devices marked with this symbol
must not be disposed of in household waste!**

For use in other countries

This appliance doesn't have symbol above. If you want to dispose your appliance, please contact your local authority or retailer for further information on collection and disposal.

INSTALLATION

■ Product Description



Note!

- The product line chart is for reference only, please refer to real product as standard.

Accessories



Transport
hole plug

Water inlet hose
cold water

Owner's manual

Rat resistance
panel(optional)

Screw(optional)

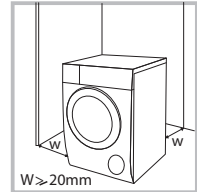
INSTALLATION

■ Installation

Installation area

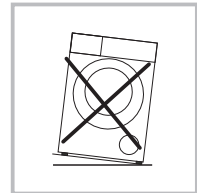
Warning!

- Stability is important to prevent the product from wandering!
- Make sure that the product should not stand on the power cord.



Before installing the machine, the location characterized as follows shall be selected:

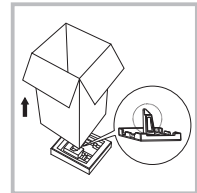
1. Rigid, dry, and level surface.
2. Avoid direct sunlight.
3. Room temperature is above 5°C.
4. Keep far away from the heat resources such as coal or gas.



Unpacking the washing machine

Warning!

- Packaging material (e.g. Films, Styrofoam) can be dangerous for children.
- There is a risk of suffocation ! Keep all packaging well away from children.



1. Remove the cardboard box and styrofoam packing.
2. Lift the washing machine and remove the base packing. Make sure the small triangle foam is removed with the bottom one together. If not, lay the unit down with side surface, then remove the small foam from the unit bottom manually.
3. Remove the tape securing the power supply cord and drain hose.
4. Remove the water inlet hose from the drum.

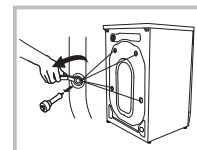
Remove transport bolts

Warning!

- You must remove the transport bolts from the backside before using the product.
- You'll need the transport bolts again if you move the product, so make sure you keep them in a safe place.

Please take the following steps to remove the bolts:

1. Loosen 4 bolts with spanner and then remove them.
2. Cover the hole with transport hole plugs.
3. Keep the transport bolts properly for future use.



INSTALLATION

Levelling the washing machine

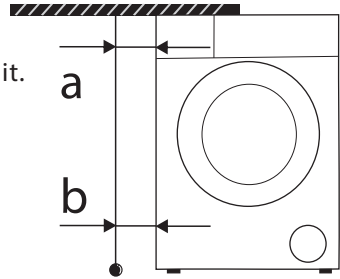


Warning!

- Check with the gradienter if the machine placement is balanced and steady.
- If there is no gradienter, check the balance as per the following method.

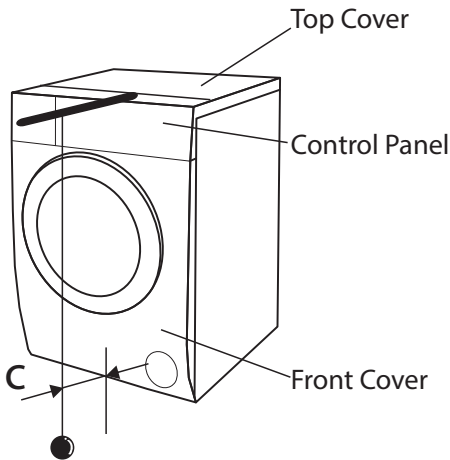
1.If it's balanced from left to right.

- Take a long stick, and tie a rope at the end of it. Bind a heavy object at the end of the rope.
- Hang the rope from the top cover of the machine. Adjust the legs till the difference between 'a' and 'b' is less than 1 cm.



2.If it's balanced from front to back

- Put the stick at the middle of the control panel, and hang the rope in front of the machine.
- Keep 10cm away from the rope end to the control panel edge. Adjust the legs till 'c' is 3.5~4.5cm ('c' is the distance from rope to bottom of front cover).



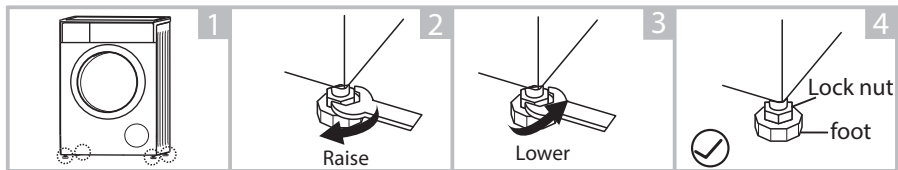
INSTALLATION

Levelling the washing machine

Warning!

- The lock nuts on all four feet must be screwed tightly against the housing.

1. Check if the legs are closely attached to the cabinet. If not, please turn them to their original positions and tighten the nuts.
2. Loosen the lock nut and turn the feet until it closely contacts with the floor.
3. Adjust the legs and lock them with a spanner, make sure the machine is steady.



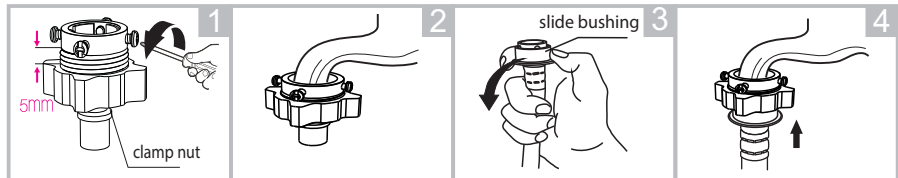
Connect Water Inlet Hose

Warning!

- To prevent leakage or water damage, follow the instructions in this chapter !
- Do not kink, crush, or modify water inlet hose.

Connect the water inlet hose as indicated, There are two ways to connect the water inlet hose.

1. Connection between ordinary tap and water inlet hose.



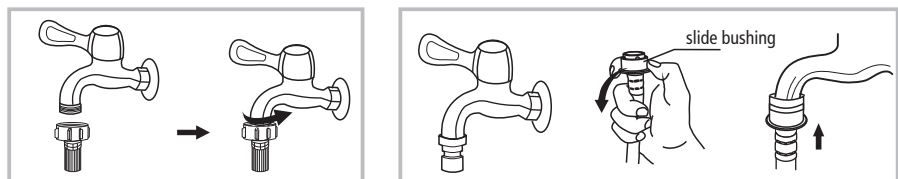
Loosen clamp nut and four bolts

Press the tap end tightly to the rubber ring inside the clamp, and then, tighten the 4 bolts

Press slide bushing, insert water inlet hose into connecting base

Connection finished

2. Connection between screw tap and water inlet hose.

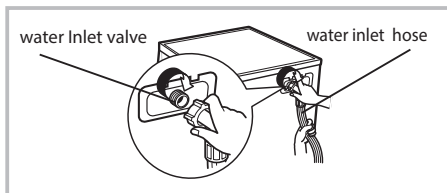


Tap with threads and water inlet hose

Special tap for washing machine

INSTALLATION

Connect the other end of water inlet hose to the inlet valve at the backside of product and fasten the hose tightly clockwise.



Drain Hose

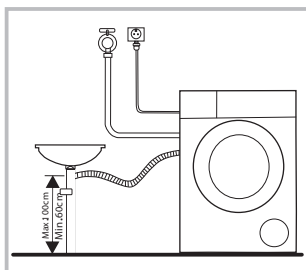
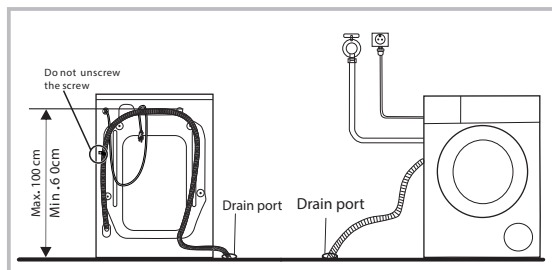


Warning!

- Do not kink or protract the drain hose.
- Position drain hose properly ,otherwise damage might result of water leakage.

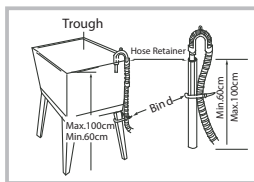
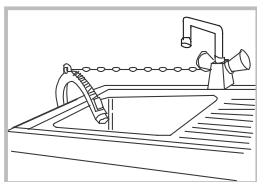
There are two ways to place the end of drain hose:

- 1.Put it into the drain port.If the drain hose is put into the drain hole on the floor, fix the drain hose on the back of the appliance to prevent water overflow from the drum.
- 2.Connect it to the branch drain hose of the trough.



Note!

- If the machine has drain hose support, please install it like the following .



Warning!

- When installing drain hose, fix it properly with a rope.
- If drain hose is too long, do not force it into washing machine as it will cause abnormal noises.

OPERATIONS

■ Quick Start

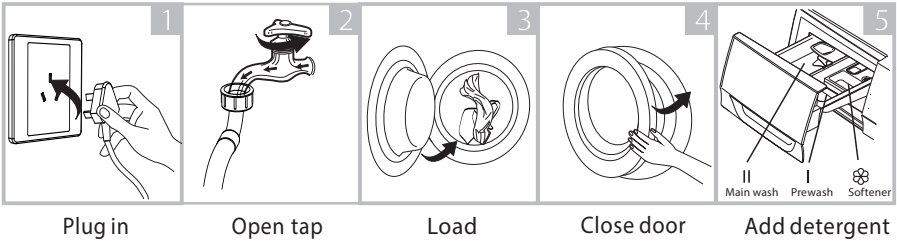


Caution!

- Before washing, please make sure it's installed properly.
- Before washing at first time, the washing machine shall be operated in one round of the whole procedures without clothes in as follows.
The suggested program is "DRUM CLEAN".

OPERATIONS

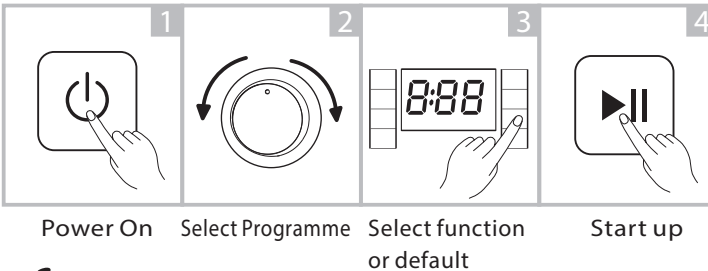
1. Before Washing



Note!

- Detergent only need to be added in "case I" after selecting pre-washing for machines with this function.

2. Washing



Note!

- If default is selected, step 3 can be skipped.

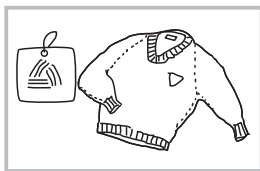
3. After Washing

Buzzer beep or "End" on display.

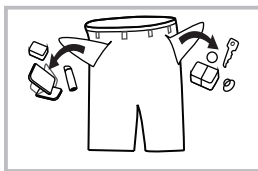
OPERATIONS

■ Before Each Washing

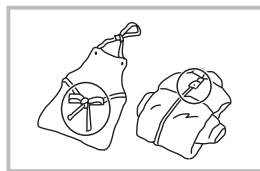
- The working condition of the washer should be 5°C-40°C. If used under 0°C, the inlet valve and draining system may be damaged. If the machine is placed under condition of 0°C or less, then it should be transferred to normal ambient temperature to ensure the water inlet hose and drain hose are not frozen before use.
- Please check the labels and the explanation of using detergent before wash. Use non-foaming or less-foaming detergent suitable for washing machine properly.



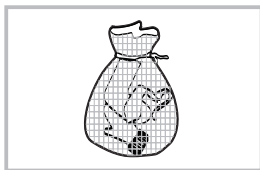
Check the label



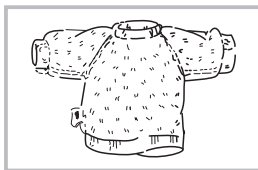
Take out the items out of the pockets



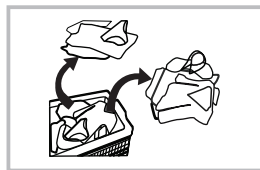
Knot the long strips, zip or button



Put small clothes into the pillow slip



Turn easy-pilling and long-pile fabric inside out



Separate clothes with different textures

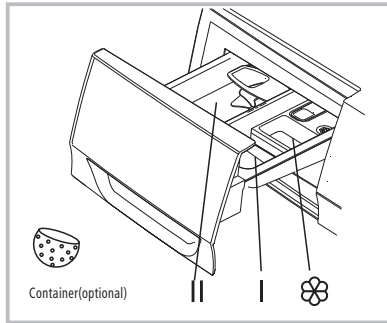
Warning!

- When washing a single clothes, it may easily cause great imbalance and give alarm. Therefore it is suggested to add one or two more clothes to be washed together so that washing process can be done smoothly.
- Don't wash the clothes soaked in kerosene, gasoline, alcohol and other flammable materials.

OPERATIONS

■ Detergent Dispenser

- I Pre wash detergent
- II Main wash detergent
- ☼ Softener



Pull out the dispenser



Caution!

- To prevent powder detergent from remaining in the dispenser under low water pressure, add the powder detergent into the Container, then put it into the drum.
- Detergent only need to be added in "case I" after selecting pre-washing for machines with this function.

Programme	I	II	☼	Programme	I	II	☼
COTTON	○	●	○	ANTI-ALLERGY		●	○
GREATWAVES	○	●	○	ECO WASH		●	○
MIX	○	●	○	WOOL		●	○
BEDLINEN	○	●	○	WASH 45'		●	○
SPIN ONLY				QUICK 12'		●	○
DRUM CLEAN							

- Means must
- Means optional



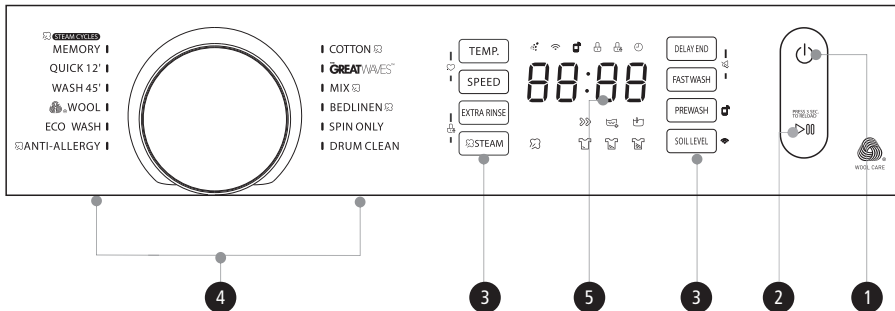
Note!

- As for the agglomerated or ropy detergent or additive, before they are poured into the detergent box, it is suggested to use some water for dilution to prevent the inlet of detergent box from being blocked and overflowing while filling water.
- Please choose suitable type of detergent for the various washing temperature to get the best washing performance with less water and energy consumption.

OPERATIONS

Control Panel

Model:MFT80-S1415BPU/T02EW-VN; MFT90-S1415BPU/T02EW-VN;
MFT100-U1415BPU/T02EW-VN



Note!

- The chart is for reference only, Please refer to real product as standard.

1 On/Off

Product is switched on or off.

2 Start/Pause

Press the button to start or pause the washing cycle.

3 Option

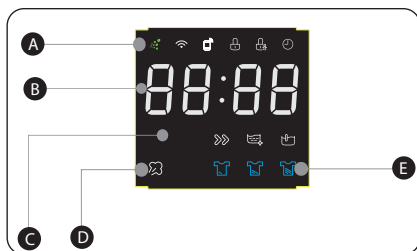
This allows you to select an additional function and will light when selected.

4 Programmes

Available according to the laundry type.

5 Display

The display shows the settings, estimated time remaining, options, and status messages for your washer. The display will remain on through the cycle.



A UFB-WiFi-Remote control-Door lock
-Child lock-Delay

B Wash Time Delay EndTime Error End
0:55 2h E20 End

C Fast wash-Extra rinse-Prewash

D Steam

E Soil level (light-normal-extra)

OPERATIONS

■ Option



PREWASH

The Prewash function can get an extra wash before main wash, it is suitable for washing the dust rises to surface of the clothes; You need to put detergent into the Case (I) when select it.



EXTRA RINSE

The laundry will under go extra rinse once after you select it.



FAST WASH

The function can decrease the washing time.



SOIL LEVEL

It is suitable for different level of soil (from light to extra).



DELAY END

Set the Delay end function:

1. Select a programme
2. Press the DELAY END button to choose the time (the delaying end time is 1-24 H.)
3. Press [Start/Pause] to commence the delay operation



On/Off Choose the Programme Setting time Start

Cancel the Delay function:

Press the [DELAY END] button until the display be 0H. It should be pressed before starting the programme. If the programme already started, should press the [On/Off] button to reset the programme.



Caution!

- If there is any break in the power supply while the machine is operating, a special memory stores the selected programme and when the power is restarted, the selected programme will continue running.
-



STEAM

STEAM function can penetrate the fiber, which effectively eliminate bacteria and germs, preventing odors.

STEAM function can be selected with "COTTON", "MIX", "BEDLINE" and "ANTI-ALLERGY".

OPERATIONS

Programme	Option					
	EXTRA RINSE	STEAM	DELAY END	FAST WASH	PREWASH	SOIL LEVEL
COTTON	<input type="radio"/>	<input type="radio"/>	<input type="radio"/>	<input type="radio"/>	<input type="radio"/>	<input type="radio"/>
GREATWAVES	<input type="radio"/>		<input type="radio"/>	<input type="radio"/>	<input type="radio"/>	<input type="radio"/>
MIX	<input type="radio"/>	<input type="radio"/>	<input type="radio"/>	<input type="radio"/>	<input type="radio"/>	<input type="radio"/>
BEDLINEN	<input type="radio"/>	<input type="radio"/>	<input type="radio"/>	<input type="radio"/>	<input type="radio"/>	<input type="radio"/>
SPIN ONLY			<input type="radio"/>			
DRUM CLEAN			<input type="radio"/>			
ANTI-ALLERGY	<input type="radio"/>	<input type="radio"/>	<input type="radio"/>			<input type="radio"/>
ECO WASH	<input type="radio"/>		<input type="radio"/>			<input type="radio"/>
WOOL	<input type="radio"/>		<input type="radio"/>			<input type="radio"/>
WASH 45'			<input type="radio"/>			
QUICK 12'						

Means optional

OPERATIONS

■ Other Functions



RELOAD

Cloths can be added after strating washing process.

Please follow the steps as bellow:

1. Press [Start/Pause] for 3 seconds.
2. Wait until the drum stops rotation.
3. The door is unlocked.
4. Add cloths into drum.
5. Close the door and Press [Start/Pause] .



Press[Start/Pause]3sec.

Reload the clothes

Start/Pause



Caution!

- Don't use the Reload function when the water level is over the lower edge of the door or the water temperature is high.



MEMORY

Frequently used porecess can be memorized.

Follow the steps as bellow:

1. Select programme.
2. Set washing time, rinse frequency, and spin drying time.
3. Set options.
4. Press [TEMP.] and [SPEED] for 3 seconds.



CHILD LOCK

To avoid mis operation by children.



On/Off

Start/Pause

Press [EXTRA RINSE] and [STEAM]
3 sec. till buzzer beep.



Caution!

When the Child Lock is activated, the display will alternately show "CL" and the remaining time. Pressing any other button will cause the Child Lock indicator to flash for 3 sec.

When the program ends, "CL" and "END" will alternate on the display for 10 sec, then the indicator will flash for 3 sec.

The Child Lock deactivates the function of all buttons except the On/Off button and the Child lock button!

Only the simultaneous pressing of the two buttons [EXTRA RINSE] and [STEAM] can deactivate the Child Lock!

Please deactivate the Child Lock before selecting a new program!

OPERATIONS

SPEED

SPEED

Press the [SPEED] button to change the spin speed.

Programme	Default Speed(rpm)	Programme	Default Speed(rpm)
COTTON	1000	ANTI-ALLERGY	800
GREATWAVES	1000	ECO WASH	800
MIX	1000	WOOL	600
BEDLINEN	1000	WASH 45'	800
SPIN ONLY	1000	QUICK 12'	800
DRUM CLEAN	--		

TEMP.

TEMP.

Press the button to regulate the temperature(Cold,20°C,30°C, 40°C,60°C,90°C)
The display show "--" means the temperature is cold.



MUTE THE BUZZER

Press the [DELAY END] and [FAST WASH] button for 3sec.,the buzzer is mute.
To activate the buzzer function, press the button again for 3 seconds.
The setting will be kept until the next reset.



UFB Function

- Ultra Fine Bubble (UFB) is an invisibly small Nano size air bubble that is smaller than a fiber gap of cotton.
 - UFB deliver surfactants to stains deep inside the cloth. Thus UFB promotes the easy removing stains.
 - All washing program with the UFB function.
-



WiFi

Methods to turn on the Wi-Fi function

1. Press [SOIL LEVEL] 3 seconds to turn on the Wi-Fi function, it can also configure the network or reset the network.

Methods to turn off the Wi-Fi function

1. Press [TEMP.] 3 seconds to turn off the Wi-Fi function.
 2. Or unplug the appliance.
-



Remote Control

This is the switch of remote control, if you want to use your smartphone to control the washing machine remotely, you need to hold [PRE WASH] 3seconds. Considering the safe operation of washing machine, the smartphone remote control should meet the following conditions:

1. The appliance should connect to the internet;
2. The door of drum should be closed.

Remark:

- If the door is open in anytime, the remote control function will be failure.
- The remote control function is turned off at the end of each cycle automatically, if you want to use remote control function again, you need turn on it again.

OPERATIONS

Instructions to Connection with the TSmartLife App

Before you start, make sure that:

1. Your smartphone is connected to home WiFi network, and you know the network password.
2. Make sure you are near the home appliance.
3. The 2.4GHz band wireless signal is enabled on your wireless router.

Follow the below steps to enter the remote control state

Download the TSmartLife App

On an app market (Google Play Store, Apple App Store), search for "TSmartLife" and find the TSmartLife app. Download and install it on your phone. You can also download the app by scanning the QR code below.



Register and log in

Open the TSmartLife app, and create a new account to start (you can also register through a third-party account). If you already had an existing account, use the account to log in.



Connect your devices to TSmartLife

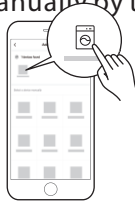
- 1: Please make sure your mobile phone is connected to WiFi. If not, go to Settings and turn on the wireless connection, select and connect to a WiFi. Also please turn on the Bluetooth on your phone. If not, go to Settings and turn it on.
- 2: Please power on your devices.
- 3: Open TSmartLife app on your phone.

OPERATIONS

4: If a message of "Smart devices discovered nearby" appears, click to add.



5: If no message appears, select "+" on the page and select your device in the list of nearby devices available. If your device is not listed, please add your device manually by the device category and device model.




6: Connect your device to WiFi according to the instructions on app. If the connection fails, please follow the instructions provided by the app to continue with the operation.



OPERATIONS

WiFi Status Light

	Slowly flashing	Waiting for connection
	Quickly flashing	Connecting
	Quickly flashing solid	Connected to your wireless router

Notes

- Make sure your devices are powered on.
- Keep your mobile phone close enough to your device when you are connecting network to your device.
- Connect your mobile phone to the wireless network at home, and make sure you know the password of the WiFi.
- Check if your router supports 2.4 GHz WiFi band and turn it on. If you are not sure whether the router supports 2.4 GHz band, please contact the router manufacturer.
- The device cannot connect to the WiFi that requires authentication, and it usually appears in public area such as hotels, restaurants, etc. Please connect to a WiFi that does not require authentication.
It is recommended to use a WiFi name that only contains letters and numbers. If your WiFi name contains special characters,
- please modify it in the router.
Turn off the WLAN+ (Android) or WLAN Assistant (iOS) function of
- your mobile phone when connecting network to your devices.
In the case that your device connected to WiFi before but it needs to reconnect, please click "+" on app Home page, and add your device again by the device category and model according to the instructions on app.

Wi-Fi INFORMATION

Working Frequency	2.4G
Extreme Temperature Range	-20°C~85°C
Max RF Power Output	WiFi: E.I.R.P 18dBm BT: 8dBm

OPERATIONS

■ Programmes Programmes are available according to the laundry type.

COTTON	Hard-wearing textiles, heat-resistant textiles made of cotton or linen.
MIX	Mixed load consisting of textiles made of cotton and synthetics.
GREATWAVES	Can wash brightly colored clothes, it can protect the colors better. Lower temp. water still achieve great cleaning performance.
ECO WASH	This program is suitable for energy saving wash
WASH 45'	This programme is suitable for washing not very dirty clothes, save more energy and washing time.
QUICK 12'	This procedure is suitable for washing few and not very dirty clothes quickly.
SPIN ONLY	Spin with selectable spin speed.
WOOL	Hand or machine-washable wool or richwool textiles. Especially gentle wash programme to prevent shrinkage, longer programme pauses .
BEDLINEN	This program is specially designed for washing Bedlinen.
DRUM CLEAN	This program is specially set in this machine to clean the drum and tub. It applies 90°C high temperature water to make the drum and tub. When this procedure is performed, the clothes can not be added. When proper amount of chlorine bleaching agent is put in, the drum cleaning effect will be better. The customer can use this procedure regularly according to the need.
ANTI-ALLERGY	This program applies 60°C high temperature sterilization to make the clothes washing more clean .to achieve the anti-allergy effect.



WOOL CARE

The wool wash cycle of this machine has been approved by The Woolmark Company for the washing of machine washable wool products provided that the products are washed according to the instructions on the garment label and those issued by the manufacturer of this washing machine.M1661

OPERATIONS

■ Washing Programmes Table

Programme	Load(kg)			Temp.(°C)	Default Time
	8.0	9.0	10.0		
	8.0	9.0	10.0	Default	
COTTON	8.0	9.0	10.0	40	1:18
GREATWAVES	4.0	4.5	5.0	20	3:47
MIX	8.0	9.0	10.0	40	1:10
BEDLINEN	8.0	9.0	10.0	40	1:48
SPIN ONLY	8.0	9.0	10.0	-	0:12
DRUM CLEAN	-	-	-	90	1:18
ANTI-ALLERGY	4.0	4.5	5.0	60	4:31
ECO WASH	2.0	2.0	2.0	30	0:55
WOOL	2.0	2.0	2.0	40	1:07
WASH 45'	2.0	2.0	2.0	30	0:45
QUICK 12'	0.5	0.5	0.5	Cold	0:12



Note!

- The parameters in this table are only for user's reference. The actual parameters maybe different with the parameters in above mentioned table.

MAINTENANCES

■ Cleaning And Care

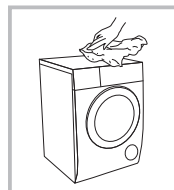


Warning!

- Before your maintenance starts, please unplug the machine and close the tap.

Cleaning The Cabinet

Proper maintenance on the washing machine can extend its working life. The surface can be cleaned with diluted non-abrasive neutral detergents when necessary. If there is any water overflow, use the dry cloth to wipe it off immediately. No sharp items are allowed.



Note!

- Formic acid and its diluted solvents or equivalent are forbidden, such as alcohol, solvents or chemical products, etc.

Cleaning The Drum

The rusts left inside the drum by the metal articles shall be removed immediately with chlorine-free detergents. Never use steel wool.

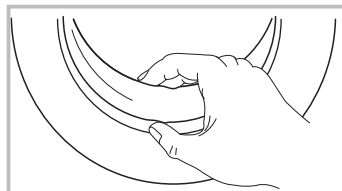


Note!

- Don't put laundry in the washing machine during the drum cleaning.

Cleaning The Gasket And Glass

Wipe the glass and gasket after each wash to remove lint and stains. If lint builds up it can cause leaks. Remove any coins, buttons and other objects from the gasket after each wash.



MAINTENANCES

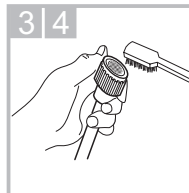
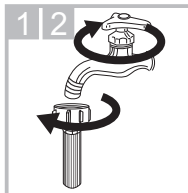
Cleaning The Inlet Filter

Note!

- Inlet filter must be cleaned if water reduces than before.

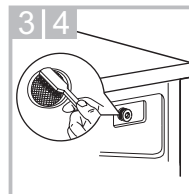
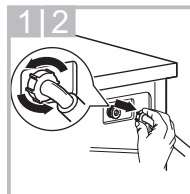
Washing the filter in the water inlet hose

1. Close the tap.
2. Remove water inlet hose from the tap.
3. Clean the filter.
4. Reconnect the water inlet hose.



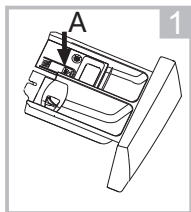
Washing the filter in washing machine:

1. Screw off the water inlet hose from the backside of the machine.
2. Pull out the filter with long nose pliers and reinstall it back after being washed.
3. Use the brush to clean the filter.
4. Reconnect the water inlet hose.

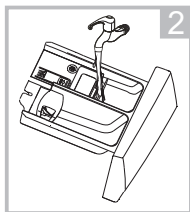


Clean The Detergent Dispenser

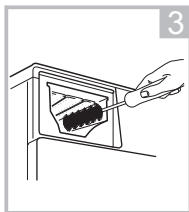
1. Press down the arrow location on softener cover inside the dispenser drawer.
2. Lift the clip up and take out softener cover and wash all grooves with water.
3. Restore the softener cover and push the drawer into position.



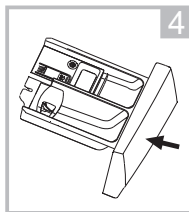
Pull out the dispenser drawer with press the A



Clean the dispenser drawer under water



Clean inside the recess with an old toothbrush



Insert the dispenser drawer

Note!

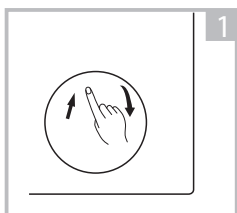
- Do not use alcohol, solvents or chemical products to clean the machine.

MAINTENANCES

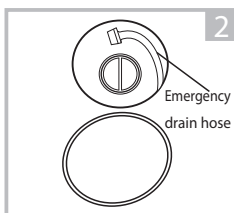
Cleaning The Drain Pump Filter

⚠ Warning!

- Be careful of the hot water!
- Wait until the water cools down.
- Unplug the machine to avoid electrical shock before maintenance.
- Drain pump filter can filter the lints and small foreign matters from the washing.
- Clean the filter periodically to ensure the normal operation of washing machine.



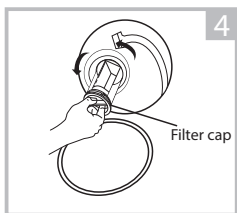
Open the lower cover cap



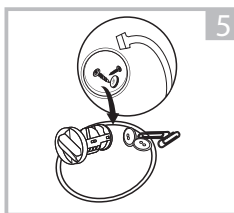
Pull out the emergency drain hose, and take off the hose cap



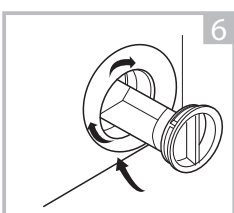
After water runs out, reset the drain hose



Open the filter cap by turning to the counter clockwise



Remove extraneous matter



Close the filter cap and the lower cover cap

⚠ Caution!

- Make sure that filter cap and emergency drain hose are reinstalled properly, filter cap should be inserted aligning to hole plates otherwise water may leak.
- When the appliance is in use and depending on the programme selected there can be hot water in the pump. Never remove the pump cover during a wash cycle, always wait until the appliance has finished the cycle, and is empty. When replacing the filter cap, ensure it is securely re-tightened.

MAINTENANCES

■ Trouble Shooting

The start of the appliance does not work or it stops during operation. First try to find a solution to the problem, If not, contact the service centre.

Description	Reason	Solution
Washing machine can not start up	Door is not closed properly	Restart after the door is closed Check if the clothes is stuck
Door can't be opened	Safety protection design is working	Disconnect the power, restart the product
Water leakage	Connection of water inlet hose or drain hose is not proper.	Check connection of water inlet hose and drain hose.
Detergent residues in the box	Detergent is dampened or agglomerated	Clean and wipe the detergent box
Indicator or display does not light	Electrical power cord may not be plugged in or connection may be loose.	Make sure plug fits tightly in wall outlet. Check the power plug is connected correctly.
Abnormal noise		Check if the fixing (bolts) have been removed Check it's installed on a solid and level floor

Description	Reason	Solution
E30	Door is not closed properly	Restart after the door is closed Check if the clothes is stuck
E10	Water supply duration is too long	Check if the water pressure is too low Straighten the water inlet hose Check if the inlet valve filter is blocked
E21	Water drain duration is too long	Check if the drain hose is blocked
E12	Water overflow	Stop using the washing machine and call the service center for repair
EXX	Others	Try operation again. If the same trouble continues, call for service.

Note!

- After the check, activate the appliance. If the problem occurs or the display shows other alarm codes again, contact the service.

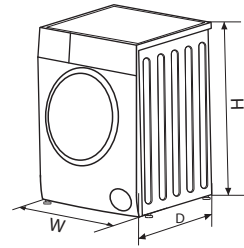
MAINTENANCES

■ Technical Specifications

Power Supply 220-240V~,50Hz

MAX.Current 10A

Standard Water Pressure 0.05MPa~1MPa



Model	Washing Capacity	Dimension (W*D*H mm)	Net Weight	Rated Power
TW-BK95GF4T	8.5kg	595*615*850	69kg	1900W
TW-BK105GF4T	9.5kg	595*615*850	71kg	2000W
TW-BK115GF4T	10.5kg	595*615*850	72kg	2000W

