

TOSHIBA

Front Loading Washing Machine

OWNER'S MANUAL

MODEL
TW-BH85S2T
TW-BH95S2T

Read This Manual

Use all instructions and explanations of the installation before use. Follow the instructions carefully. Keep the operation instructions handy for later use. If the application is sold or passed on then ensure that the new owner always receives those operation instructions.

CONTENTS

SAFETY INSTRUCTIONS

■ Safety Instructions	2
-----------------------------	---

INSTALLATION

■ Product Description	9
■ Installation	10

OPERATIONS

■ Quick Start	14
■ Before Each Washing	15
■ Detergent Dispenser	16
■ Control Panel	17
■ Option.....	18
■ Other Functions	20
■ Programmes.....	22
■ Washing Programmes Table	23

MAINTENANCES

■ Cleaning And Care	24
■ Trouble Shooting	27
■ Technical Specifications	28

SAFETY INSTRUCTIONS

■ Safety Instructions

- This appliance is not intended for use by persons(includingchildren) with reduced physical,sensory or mental capabilities or lack of experience and knowledge unless they have been given supervision or instruction concerning use of the appliance by a person responsible for their safety.
- Children should be supervised to ensure that they do not play with the appliance.
- If the supply cord is damaged, it must be replaced by the manufacturer, its service agent or similarly qualified persons in order to avoid a hazard.
- The new hose-sets supplied with the appliance are to be used and that old hose-sets should not be reused.
- The openings must not be obstructed by a carpet.
- This appliance is intended to be used in household and similar applications such as:
 - staff kitchen areas in shops, offices and other working environments;
 - farm houses;
 - by clients in hotels, motels and other residential type environments;
 - bed and breakfast type environments;
 - areas for communal use in blocks of flats or in launderettes.
- The maximum permissible inlet water pressure, 1 MPa, for appliances intended to be connected to the water mains. The minimum permissible inlet water pressure,0.05 MPa, if this is necessary for the correct operation of the appliance.

SAFETY INSTRUCTIONS

■ Safety Instructions

For your safety, the information in this manual must be followed to minimize the risk of fire or explosion, electric shock, or to prevent property damage, personal injury or loss of life.

Explanation of the symbols:

Warning!

This combination of symbol and signal word indicates a potentially dangerous situation which may result in death or serious injuries unless it's avoided.

Caution!

This combination of symbol and signal word indicates a potentially dangerous situation which may result in slight or minor injuries or damage to property and the environment.

Note!

This combination of symbol and signal word indicates a potentially dangerous situation which may result in slight or minor injuries.

Warning!

The electric shock!

- If the supply cord is damaged, it must be replaced by the manufacturer, its service agent or similarly qualified persons in order to avoid a hazard.

SAFETY INSTRUCTIONS

- The new hose-sets supplied with the appliance must be used and the old hose-sets must not be used.
- Before maintenance, unplug the appliance.
- Always unplug the machine and turn off the water supply after use. The standard inlet water pressure: 0.05MPa~1MPa.
- This appliance must be grounded. In the event of malfunction or breakdown , grounding will reduce the risk of electric shock by providing a path of least resistance for electric current.
- This appliance is equipped with a cord having an equipment-grounding conductor and grounding plug. The plug must be plugged into an appropriate outlet that is properly installed and grounded in accordance with all local codes and ordinances.

- Improper connection for the appliance when using not grounded outlet or when GND terminal of outlet is not suitable with GND terminal of power plug, can result in risk of electric shock.. Check with a qualified electrician or service person if you are in doubt as to whether the appliance is properly grounded.
- Do not modify the plug provided with the appliance. If it does not fit the outlet , have a proper outlet installed by a qualified electrician.
- Make sure that the water and electrical devices must be connected by a qualified technician in accordance with the manufacturer's instructions and local safety regulations.

SAFETY INSTRUCTIONS

Risk to children!

- The appliance can be used by children aged from 8 years and above and persons with reduced physical, sensory or mental capabilities or lack of experience and knowledge if they have been given supervision or instruction concerning use of the appliance in a safe way and understand the hazards involved. Children shall not play with the appliance. Cleaning and user maintenance shall not be made by children without supervision.
- Children of less than 3 years should be supervised to ensure that they do not play with appliance.
- Animals and children may climb into the machine. Check the machine before every operation.
- Children should be supervised that they do not play with the appliance.

SAFETY INSTRUCTIONS

- Glass door may be very hot during the operation. Keep children and pets far away from the machine during the operation .
- Remove all packages and transport bolts before using the appliance. Otherwise, serious damage may result.
- Plug must be accessible after installation.

Risk of explosion!

- Do not wash or dry articles that have been cleaned in, washed in, soaked in, or spotted with combustible or explosive substances(such as wax, oil, paint, gasoline, degreasers, dry-cleaning solvents, kerosene, etc.) This may result in fire or explosion.
- Rinse the articles thoroughly by hand before putting them in the appliance.

Caution!

Installing the product!

- This washing machine is for indoor use only.
- It isn't intended to be built-in using.
- The openings must not be obstructed by a carpet.
- Washing machine shall not be installed in bath room or very wet rooms as well as in the rooms with explosive or explosive and corrosive gases.
- The washing machine with single inlet valve only can be connected to the cold water supply.
- Plug must be accessible after installation.

SAFETY INSTRUCTIONS

- Remove all packages and transport bolts before using the appliance. Otherwise, serious damage may result.

Risk of damaging appliance!

- Your product is only for home use and is only designed for the textiles suitable for machine washing.
- Do not climb up and sit on top cover of the machine.
- Do not lean against machine door.
- Cautions during Handling Machine:
 - 1.Transport bolts shall be reinstalled to the machine by a specialized person.
 - 2.The accumulated water shall be drained out of the machine.
 - 3.Handle the machine carefully. Never hold each protruded part on the machine while lifting. Machine door can not be used as the handle during the conveyance.
 - 4.This appliance is heavy. Transport with care.
- Please do not close the door with excessive forces. If it is found difficult to close the door, please check if the clothes are put in or distributed well.
- It is forbidden to wash carpets.

Operating the appliance!

- Before washing the clothes at first time, the product shall be operated in one round of the whole procedures without the clothes inside.The suggested program is "DRUM CLEAN".
- Flammable and explosive or toxic solvents are forbidden. Gasoline and alcohol etc.Shall not be used as detergents. Please only select the detergents suitable for machine washing, especially for front load washing machine.

SAFETY INSTRUCTIONS

- Make sure that all pockets are emptied. Sharp and rigid items such as coin, brooch, nail, screw or stone etc. may cause serious damages to this machine.
- Please check whether the water inside the drum has been drained before opening its door. Please do not open the door if there is any water visible.
- Be careful of burning when the product drains hot washing water.
- Never refill the water by hand during washing.
- After the program is completed, Please wait for two minutes to open the door.

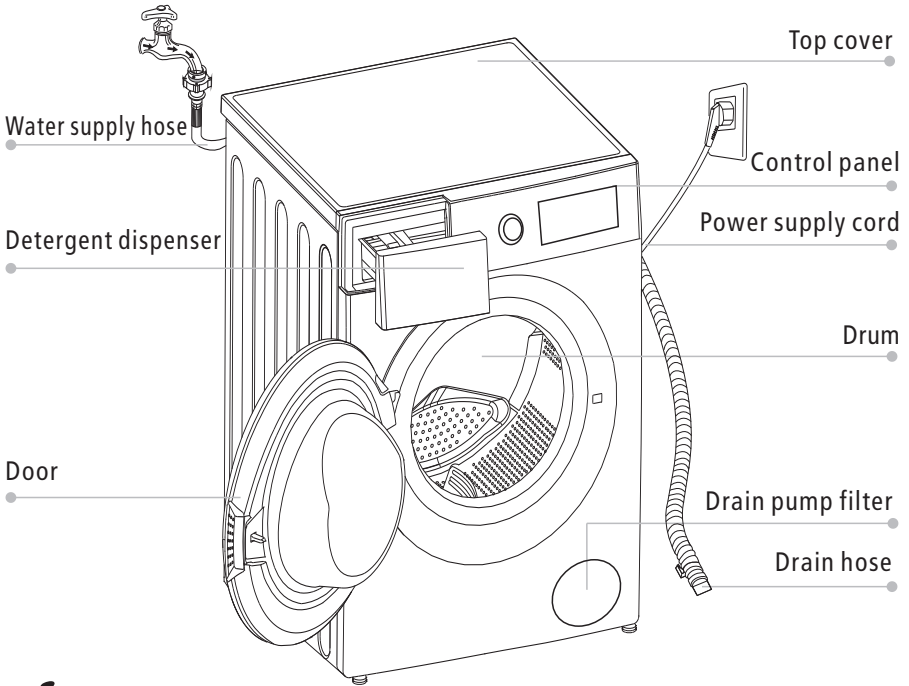
Packaging/Old appliance



This marking indicates that this product should not be disposed with other household wastes throughout the EU. To prevent possible harm to the environment or human health from uncontrolled waste disposal, recycle it responsibly to promote the sustainable reuse of material resources. To return your used device, please use the collection systems or contact the retailer where the product was purchased. They return and can take this product for environmental safe recycling.

INSTALLATION

■ Product Description



Note!

- The product line chart is for reference only, please refer to real product as standard.

Accessories



Transport
hole plug

Supply hose
cold water

Drain hose
support
(optional)

Owner's manual

Rat resistance
panel (optional)

Spanner assembly
(optional)

Screw (optional)

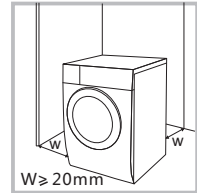
INSTALLATION

■ Installation

Installation area

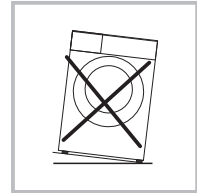
Warning!

- Stability is important to prevent the product from wandering!
- Make sure that the product should not stand on the power cord.



Before installing the machine, the location characterized as follows shall be selected:

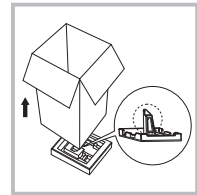
1. Rigid, dry, and level surface
2. Avoid direct sunlight
3. Sufficient ventilation
4. Room temperature is above 0°C
5. Keep far away from the heat resources such as coal or gas.



Unpacking the washing machine

Warning!

- Packaging material (e.g. Films, Styrofoam) can be dangerous for children.
- There is a risk of suffocation ! Keep all packaging well away from children.



1. Remove the cardboard box and styrofoam packing.
2. Lift the washing machine and remove the base packing. Make sure the small triangle foam is removed with the bottom one together. If not, lay the unit down with side surface, then remove the small foam from the unit bottom manually.
3. Remove the tape securing the power supply cord and drain hose.
4. Remove the inlet hose from the drum.

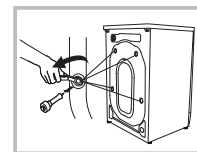
Remove transport bolts

Warning!

- You must remove the transport bolts from the backside before using the product.
- You'll need the transport bolts again if you move the product, so make sure you keep them in a safe place.

Please take the following steps to remove the bolts:

1. Loosen 4 bolts with spanner and then remove them.
2. Cover the hole with transport hole plugs.
3. Keep the transport bolts properly for future use.



INSTALLATION

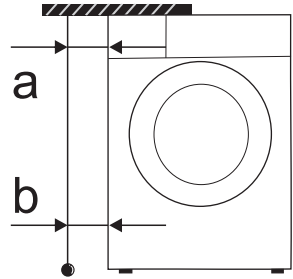
Levelling the washing machine

Warning!

- Check with the gradienter if the machine placement is balanced and steady.
- If there is no gradienter, check the balance as per the following method.

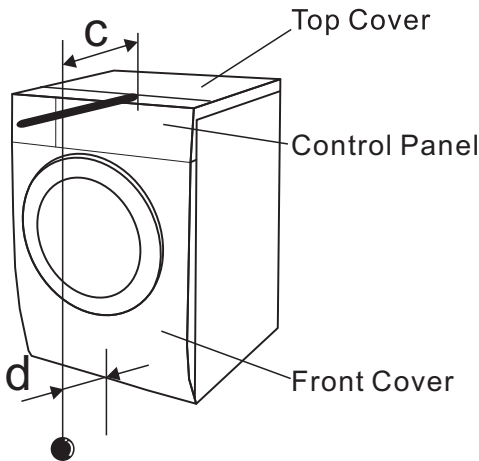
1.If it's balanced from left to right

- Take a long stick, and tie a rope at the end of it. Bind a heavy object at the end of the rope.
- Hang the rope from the top cover of the machine. Adjust the legs till the difference between 'a' and 'b' is less than 1cm.



2.If it's balanced from front to back

- Put the stick at the middle of the control panel, and hang the rope in front of the machine.
- Keep 10cm away from the rope end to the control panel edge (c). Adjust the legs till 'd' is 3.5-4.5cm ('d' is the distance from rope to bottom of front cover).



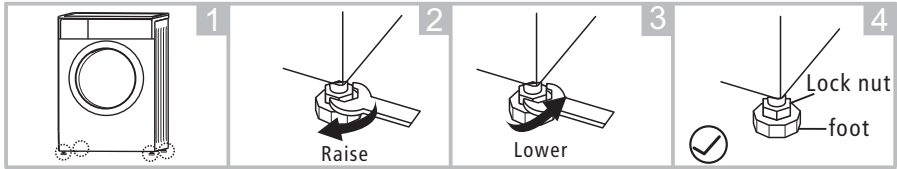
INSTALLATION

Levelling the washing machine

Warning!

- The lock nuts on all four feet must be screwed tightly against the housing.

1. Check if the legs are closely attached to the cabinet. If not, please turn them to their original positions tighten the nuts.
2. Loosen the lock nut turn the feet until it closely contacts with the floor.
3. Adjust the legs and lock them with a spanner, make sure the machine is steady.



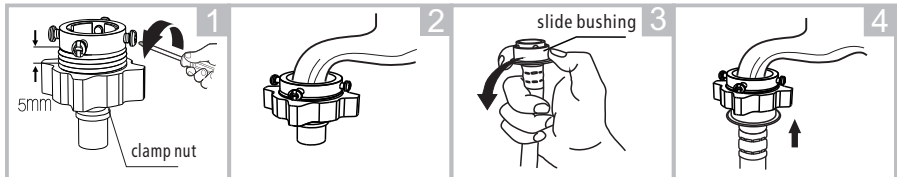
Connect Water Supply Hose

Warning!

- To prevent leakage or water damage, follow the instructions in this chapter!
- Do not kink, crush, modify or sever water inlet hose.

Connect the inlet pipe as indicated, There are two ways to connect the inlet pipe.

1. Connection between ordinary tap and inlet hose.



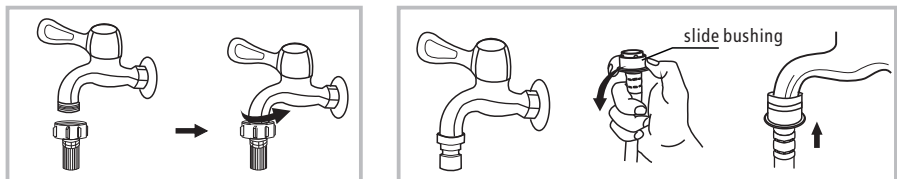
Loosen clamp nut and four bolts

Press the tap end tightly to the rubber ring and then, tighten the 4 bolts

Press slide bushing, insert inlet hose into connecting base

Connection finished

2. Connection between screw tap and inlet hose.

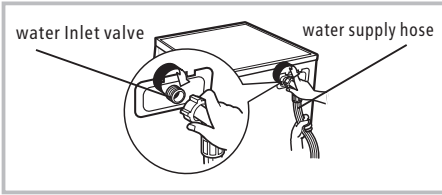


Tap with threads and inlet hose

Special tap for washing machine

INSTALLATION

Connect the other end of inlet pipe to the inlet valve at the backside of product and fasten the pipe tightly clockwise.



Drain Hose

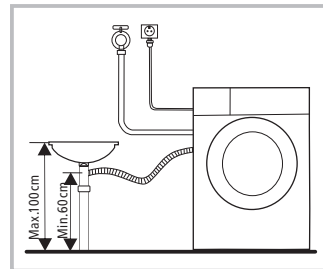
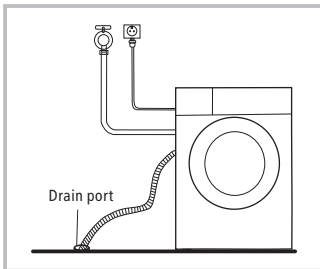
⚠ Warning!

- Do not kink or protract the drain hose.
- Position drain hose properly , otherwise damage might result of water leakage.

There are two ways to place the end of drain hose:

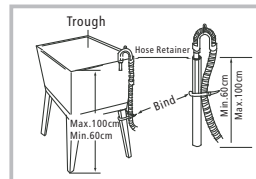
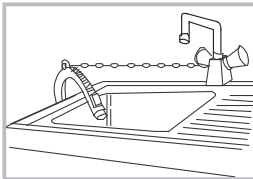
1. Put it into the drain port.

2. Connect it to the branch drain pipe of the trough.



🔧 Note!

- If the machine has drain hose support, please install it like the following .



⚠ Warning!

- When installing drain hose, fix it properly with a rope.
- If drain hose is too long, do not force it into washing machine as it will cause abnormal noises.

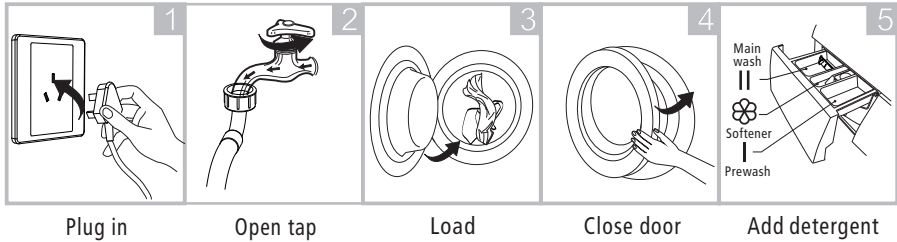
OPERATIONS

■ Quick Start

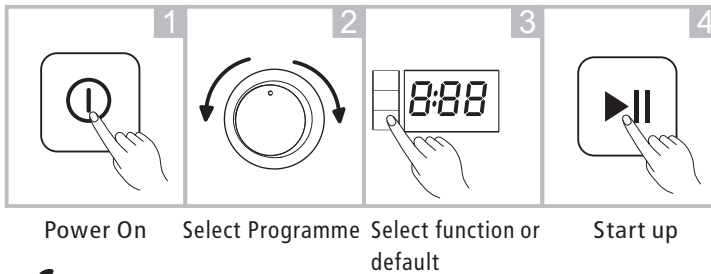
⚠ Caution!

- Before washing, please make sure it's installed properly.
- Before washing at first time, the washing machine shall be operated in one round of the whole procedures without clothes in as follows. The suggested program is "DRUM CLEAN".

1. Before Washing



2. Washing



📌 Note!

- If default is selected, step 3 can be skipped.

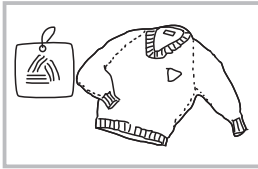
3. After Washing

Buzzer beep or "End" on display.

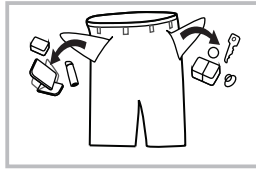
OPERATIONS

■ Before Each Washing

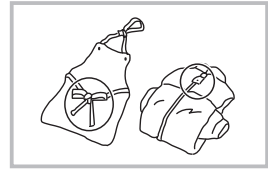
- The working condition of the washer should be (0-40)°C. If used under 0°C, the inlet valve and draining system may be damaged. If the machine is placed under condition of 0°C or less, then it should be transferred to normal ambient temperature to ensure the water supply hose and drain hose are not frozen before use.
- Please check the labels and the explanation of using detergent before wash. Use non-foaming or less-foaming detergent suitable for machine washing properly.



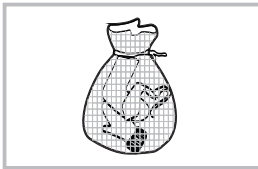
Check the label



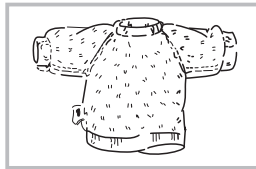
Take out the items out of the pockets



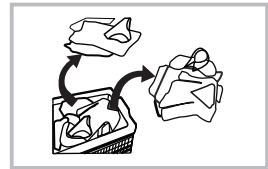
Knot the long strips, zip or button



Put small clothes into the pillow slip



Turn easy-pilling and long-pile fabric inside out



Separate clothes with different textures

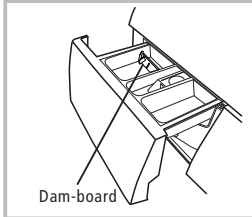
⚠ Warning!

- When washing a single clothes, it may easily cause great imbalance and give alarm. Therefore it is suggested to add one or two more clothes to be washed together so that washing process can be done smoothly.
- Don't wash the clothes soaked in kerosene, gasoline, alcohol and other flammable materials.

OPERATIONS

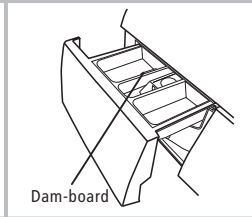
■ Detergent Dispenser

- I Pre wash detergent
- II Main wash detergent
- ☼ Softener



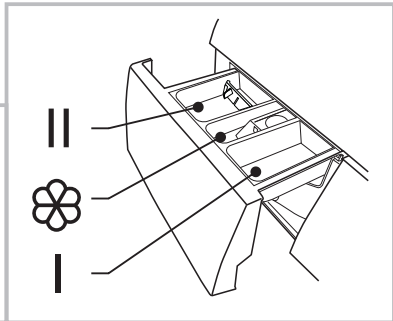
Dam-board

Liquid detergent



Dam-board

Powder detergent



Pull out the dispenser

📌 Note!

- This washing machine doesn't have prewash function, so there is no need to add detergent in "case I"

Programme	II	☼	Programme	II	☼
COTTON	●	○	COTTON ECO	●	○
SYNTHETIC	●	○	DOWN JACKET	●	○
BABY CARE	●	○	SPORT WEAR	●	○
BEDLINEN	●	○	15' QUICK	●	○
MIX	●	○	DELICATE	●	○
COLORALIVE	●	○	WOOL	●	○
SPIN ONLY			RINSE&SPIN		○
DRUM CLEAN					

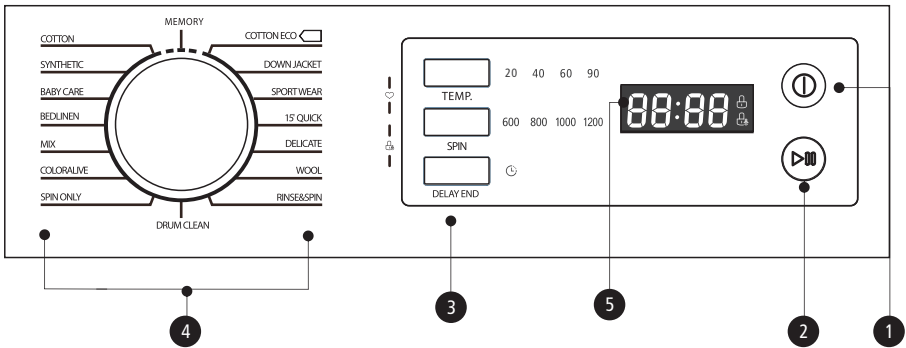
- Means must
- Means optional

📌 Note!

- As for the agglomerated or ropy detergent or additive, before they are poured into the detergent box, it is suggested to use some water for dilution to prevent the inlet of detergent box from being blocked and overflowing while filling water.
- Please choose suitable type of detergent for the various washing temperature to get the best washing performance with less water and energy consumption.

OPERATIONS

■ Control Panel



Note!

- The chart is for reference only, Please refer to real product as standard.

1 On/Off

Product is switched on or off.

2 Start/Pause

Press the button to start or pause the washing cycle.

3 Option

This allows you to select an additional function and will light when selected.

4 Programmes

Available according to the laundry type.

5 Display

The display shows the estimated time remaining, and lock messages for your washer. The display will remain on through the cycle.



A Door Lock

B Child Lock

OPERATIONS

■ Option

DELAY END

Set the Delay function:

1. Select a programme
2. Press the DELAY END button to choose the time (the delaying time is 0-24 H.)
3. Press [START/PAUSE] to commence the delay operation



Cancel the Delay function:

Press the [DELAY END] button until the display be 0H. It should be pressed before starting the programme. If the programme already started, should press the [ON/OFF] button to reset the programme.



Caution!

- If there is any break in the power supply while the machine is operating, a special memory stores the selected programme and when the power is restarted, the machine will run the previous program automatically.

OPERATIONS

Model:TW-BH85S2T / TW-BH95S2T

Programme	Option		
	TEMP.	SPIN	DELAY END
COTTON	<input type="radio"/>	<input type="radio"/>	<input type="radio"/>
SYNTHETIC	<input type="radio"/>	<input type="radio"/>	<input type="radio"/>
BABY CARE	<input type="radio"/>	<input type="radio"/>	<input type="radio"/>
BEDLINE	<input type="radio"/>	<input type="radio"/>	<input type="radio"/>
MIX	<input type="radio"/>	<input type="radio"/>	<input type="radio"/>
COLORALIVE	<input type="radio"/>	<input type="radio"/>	<input type="radio"/>
DRUM CLEAN			<input type="radio"/>
SPIN ONLY		<input type="radio"/>	<input type="radio"/>
COTTON ECO	<input type="radio"/>	<input type="radio"/>	<input type="radio"/>
DOWN JACKET	<input type="radio"/>	<input type="radio"/>	<input type="radio"/>
SPORT WEAR	<input type="radio"/>	<input type="radio"/>	<input type="radio"/>
15' QUICK	<input type="radio"/>	<input type="radio"/>	<input type="radio"/>
DELICATE	<input type="radio"/>	<input type="radio"/>	<input type="radio"/>
WOOL	<input type="radio"/>	<input type="radio"/>	<input type="radio"/>
RINSE&SPIN		<input type="radio"/>	<input type="radio"/>

Means optional

OPERATIONS

■ Other Functions



MEMORY

Memorizes the frequently used program.

Select program and options and Press [TEMP.] and [SPIN] 3 sec. to memorize the selected settings. The default is COTTON.



CHILD LOCK

To avoid mis operation by children.



ON/OFF

START/PAUSE

Press [SPIN] and [DELAY END]
3 sec. till buzzer beep.



Caution!

- Press the two buttons 3 sec. to cancel the function.
- The "CHILD LOCK" will lock all buttons except [ON/OFF].
- Cut off the power supply , the kid's protection is to be released.

OPERATIONS

SPIN SPIN

Press the button to change the spin speed.

Model:TW-BH85S2T / TW-BH95S2T

Programme	Default Speed(rpm)	Programme	Default Speed(rpm)
COTTON	800	COTTON ECO	800
SYNTHETIC	800	DOWN JACKET	800
BABY CARE	800	SPORTWEAR	800
BEDLINEN	800	15' QUICK	800
MIX	800	DELICATE	600
COLORALIVE	1000	WOOL	800
SPIN ONLY	1000	RINSE&SPIN	1000



Caution!

- When the lights of spin speed (600,800,1000,1200) is off, it means no spin process.

TEMP. TEMP.

Press the button to regulate the temperature(20°C, 40°C,60°C,90°C)
All the lights are off means the water temp. is cold.

OPERATIONS

■ Programmes

Programmes are available according to the laundry type.

COTTON	Hard-wearing textiles, heat-resistant textiles made of cotton or linen.
BABY CARE	Washing the baby's clothes, it can make the baby's wear cleaner and make the rinse performance better to protect the baby skin.
MIX	Mixed load consisting of textiles made of cotton and synthetics.
COLORALIVE	Washing brightly colored clothes, it can protect the colors better.
COTTON ECO	This program is designed for energy and washing time saving.
MEMORY	To memorize the frequently used program by pressing [TEMP.] and [SPIN] 3 sec. The default setting is COTTON.
SYNTHENTIC	Wash synthetic articles, for example: shirts, coats, blending. While washing the knitting textiles, detergent quantity shall be reduced due to its loose string construction and easily forming bubbles.
DELICATE	For delicate, washable textiles, e.g. made of silk, satin, synthetic fibres or blended fabrics.
SPIN ONLY	Extra spin with selectable spin speed.
WOOL	Hand or machine-washable wool or richwool textiles. Especially gentle wash programme to prevent shrinkage, longer programme pauses (textiles rest in wash liquor).
BEDLINEN	This program is specially designed for washing Bedlinen.
DRUM CLEAN	This program is specially set in this machine to clean the drum and tub. It applies 90°C high temperature water to sterilize the drum and tub. When this procedure is performed, the clothes must not be put in the drum. When proper amount of chlorine bleaching agent is put in, the cleaning effect will be better. The customer can use this procedure regularly according to the need.
RINSE&SPIN	Extra rinse with spin.
DOWN JACKET	Special care program for down jacket.
SPORTWEAR	Washing the activewear.
15' QUICK	This procedure is suitable for washing few and not very dirty clothes quickly.

OPERATIONS

■ Washing Programmes Table

Model:TW-BH85S2T / TW-BH95S2T

Programme	Load(kg)		Temp.(°C)	Default Time	
	7.5	8.5		7.5	8.5
	7.5	8.5	Default	7.5	8.5
COTTON	7.5	8.5	40	1:18	1:18
SYNTHETIC	3.5	4.0	40	1:16	1:16
BABY CARE	7.5	8.5	60	1:45	1:45
BEDLINEN	4.0	5.0	40	1:48	1:48
MIX	3.5	4.0	40	1:10	1:10
COLORALIVE	3.5	4.0	Cold	1:03	1:03
DRUM CLEAN	-	-	90	0:55	0:55
SPIN ONLY	7.5	8.5	-	0:12	0:12
COTTON ECO	7.5	8.5	20	0:55	0:55
DOWN JACKET	2.0	2.0	40	1:27	1:27
SPORTWEAR	2.0	2.0	20	0:45	0:45
15' QUICK	2.0	2.0	Cold	0:15	0:15
DELICATE	2.0	2.0	20	0:50	0:50
WOOL	2.0	2.0	40	1:07	1:07
RINSE&SPIN	7.5	8.5	-	0:20	0:20



Note!

- The parameters in this table are only for user's reference. The actual parameters maybe different with the parameters in above mentioned table.

MAINTENANCES

■ Cleaning And Care

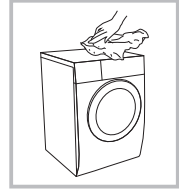


Warning!

- Before your maintenance starts, please unplug the machine and close the tap.

Cleaning The Cabinet

Proper maintenance on the washing machine can extend its working life. The surface can be cleaned with diluted non-abrasive neutral detergents when necessary. If there is any water overflow, use the dry cloth to wipe it off immediately. No sharp items are allowed.



Note!

- Formic acid and its diluted solvents or equivalent are forbidden, such as alcohol, solvents or chemical products, etc.

Cleaning The Drum

The rusts left inside the drum by the metal articles shall be removed immediately with chlorine-free detergents. Never use steel wool.

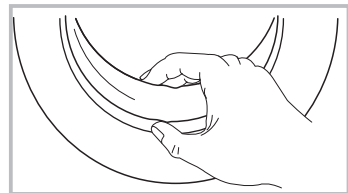


Note!

- Don't put laundry in the washing machine during the drum cleaning.

Cleaning The Gasket And Glass

Wipe the glass and gasket after each wash to remove lint and stains. If lint builds up it can cause leaks. Remove any coins, buttons and other objects from the gasket after each wash.



MAINTENANCES

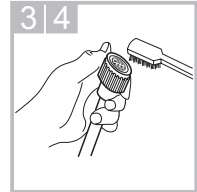
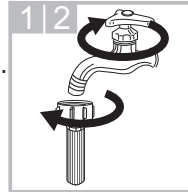
Cleaning The Inlet Filter

Note!

- Inlet filter must be cleaned if there is less water.

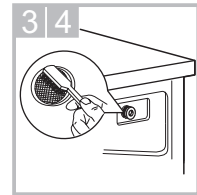
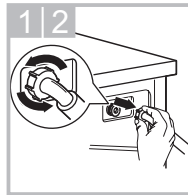
Washing the filter in the water supply hose

1. Close the tap.
2. Remove the water supply hose from the tap.
3. Clean the filter.
4. Reconnect the water supply hose.



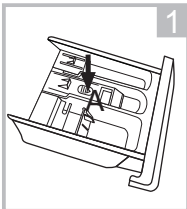
Washing the filter in washing machine:

1. Screw off the inlet pipe from the backside of the machine.
2. Pull out the filter with long nose pliers and reinstall it back after being washed.
3. Use the brush to clean the filter.
4. Reconnect the inlet pipe.

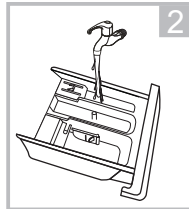


Clean The Detergent Dispenser

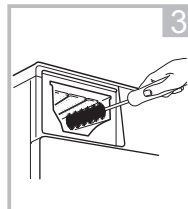
1. Press down the arrow location on softener cover inside the dispenser drawer.
2. Lift the clip up and take out softener cover and wash all grooves with water.
3. Restore the softener cover and push the drawer into position.



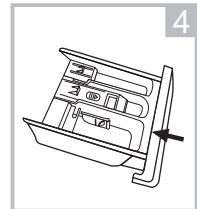
Pull out the dispenser drawer with press the A



Clean the dispenser drawer under water



Clean inside the recess with an old toothbrush



Insert the dispenser drawer

Note!

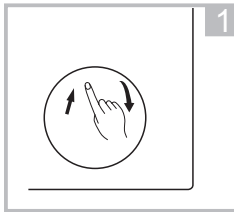
- Do not use alcohol, solvents or chemical products to clean the machine.

MAINTENANCES

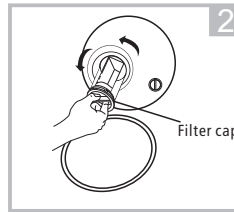
Cleaning The Drain Pump Filter

Warning!

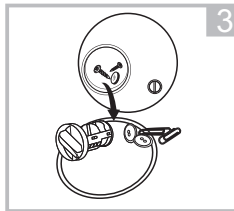
- Be careful of the hot water!
- Allow the water to cool down.
- Unplug the machine to avoid electrical shock before maintenance.
- Drain pump filter can filter the lints and small foreign matters from the washing.
- Clean the filter periodically to ensure the normal operation of washing machine.



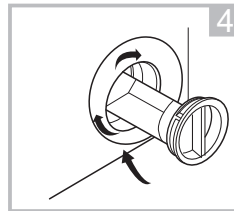
Open the lower cover cap



Open the filter cap by turning to the counter clockwise



Remove extraneous matter



Close the filter cap and the lower cover cap.

Caution!

- Make sure that filter cap is reinstalled properly, filter cap should be inserted aligning to hole plates otherwise water may leak.
- When the appliance is in use and depending on the programme selected there can be hot water in the pump. Never remove the pump cover during a wash cycle, always wait until the appliance has finished the cycle, and is empty. When replacing the filter cap, ensure it is securely re-tightened.

MAINTENANCES

■ Trouble Shooting

The start of the appliance does not work or it stops during operation. First try to find a solution to the problem, If not, contact the service centre.

Description	Reason	Solution
Washing machine cannot start up	Door is not closed properly	Restart after the door is closed Check if the clothes is stuck
Door can't be opened	Washer's safety protection design is working	Disconnect the power, restart the product
Water leakage	The connection between inlet pipe or outlet hose is not tight	Check and fasten water pipes Check outlet hose
Detergent residues in the box	Detergent is dampened or agglomerated	Clean and wipe the detergent box
Indicator or display does not light	Electrical power cord may not be plugged in or connection may be loose.	Make sure plug fits tightly in wall outlet. Check the power plug is connected correct.
Abnormal noise		Check if the fixing (bolts) have been removed Check it's installed on a solid and level floor

Description	Reason	Solution
E30	Door is not closed properly	Restart after the door is closed Check if the clothes is stuck
E10	Water injecting problem while washing	Check if the water pressure is too low Straighten the water pipe Check if the inlet valve filter is blocked
E21	Overtime water draining	Check if the drain hose is blocked
E12	Water overflow	Stop using the washing machine and call the service center for repair
EXX	Others	Please try again first, call up service line if there are still troubles

Note!

- After the check, activate the appliance. If the problem occurs or the display shows other alarm codes again, contact the service.

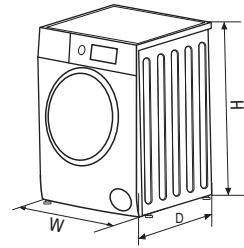
MAINTENANCES

■ Technical Specifications

Power Supply 220~,50Hz

MAX.Current 10A

Standard Water Pressure 0.05MPa~1MPa



Model	Washing Capacity	Dimension (W*D*H mm)	Net Weight	Rated Power
TW-BH85S2T	7.5kg	595*530*850	61kg	1700W
TW-BH95S2T	8.5kg	595*600*850	68kg	1700W

TOSHIBA